

| TREES | Common Name | Mature Size |
|---|--------------------|-------------|
| <i>Fraxinus excelsior 'Aurea'</i> | Golden Ash | 7 x 7 |
| <i>Ginkgo biloba</i> | Maidenhair Tree | 12 x 5 |
| <i>Gleditsia tricanthos 'Shademaster'</i> | Green Honey Locust | 11 x 8 |
| <i>Lagerstromia indica 'Natchez'</i> | Crepe Myrtle | 6 x 4 |
| <i>Nyssa sylvatica</i> | Tupelo | 11 x 6 |
| <i>Pistacia chinensis</i> | Chinese Pistacia | 8 x 6 |
| <i>Populus nigra 'Italica'</i> | Lombardy Poplar | 15 x 3 |
| <i>Pyrus 'Aristocrat'</i> | Ornamental Pear | 11 x 7 |
| <i>Pyrus 'Capital'</i> | Ornamental Pear | 12 x 3 |
| <i>Quercus palustris</i> | Swamp Spanish Oak | 15 x 8 |

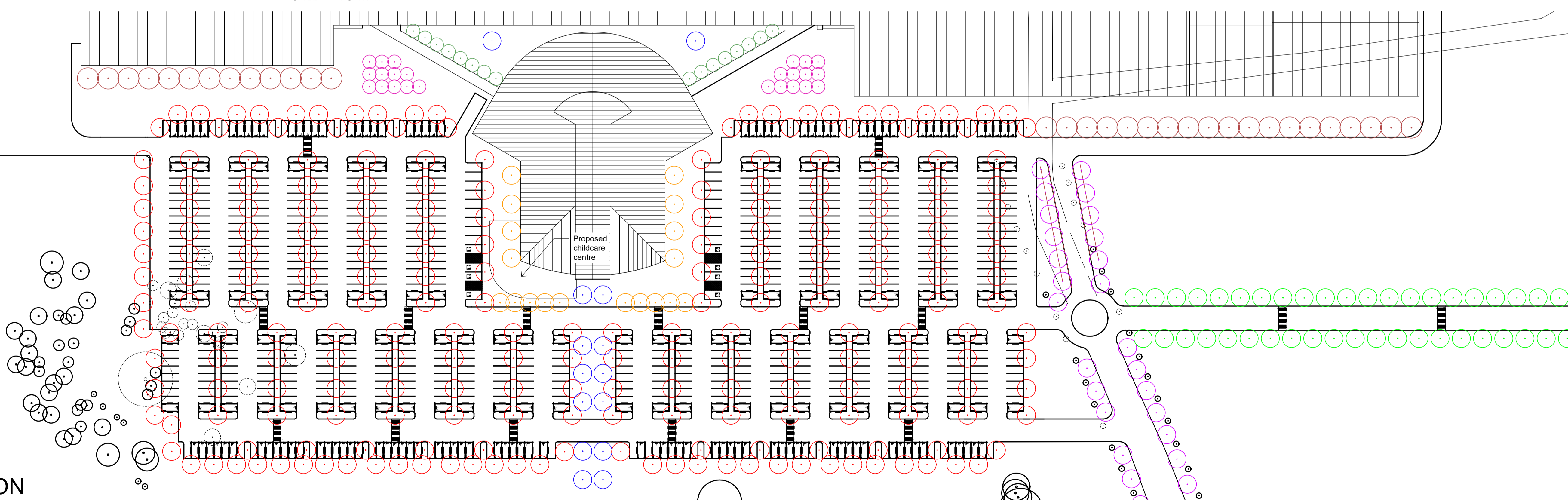
| SCREENING TREES | Common Name | Mature Size |
|--------------------------|-----------------------------|-------------|
| <i>Angophora costata</i> | Smooth Barked Apple | 30 x 10 |
| <i>Casuarina glauca</i> | Swamp Oak | 15 x 8 |
| <i>Melaleuca decora</i> | White Feathered Honeymyrtle | 5 X 2 |

| MATRIX PLANTING | Common Name | Mature Size |
|---------------------------------|------------------------|-------------|
| <i>Eucalyptus crebra</i> | Narrow-leaved Ironbark | 35 x 10 |
| <i>Eucalyptus maculata</i> | Spotted Gum | 30 x 10 |
| <i>Casuarina cunninghamiana</i> | River Oak | 30 x 8 |
| <i>Casuarina glauca</i> | Swamp Oak | 15 x 8 |

| SHRUBS | Common Name | Mature Size |
|-------------------------------------|----------------------------|-------------|
| <i>Acacia falcata</i> | Hickory Wattle | 3 x 2 |
| <i>Acacia gunnii</i> | Ploghshare Wattle | 1 x 1.5 |
| <i>Callistemon linearis</i> | Narrow Leaved Bottle Brush | 3 x 3 |
| <i>Correa alba</i> | White Correa | 1 x 1 |
| <i>Correa 'Dusky Bells'</i> | Correa | 1 x 1.5 |
| <i>Grevillea alpina</i> | Mountain Grevillea | 3 x 3 |
| <i>Grevillea 'Crosbie Morrison'</i> | Grevillea | 1.5 x 2.5 |
| <i>Hakea orthorhyncha</i> | Bird Beak Hakea | 2.5 x 2.5 |
| <i>Hakea trineura</i> | Three veined Hakea | 3 x 3 |
| <i>Melaleuca thymifolia</i> | Thyme Honey myrtle | 1 x 1.5 |
| <i>Myoporum insulare</i> | Common Boobialla | 3 x 3 |
| <i>Rhagodia spinescens</i> | Spiny Saltbush | 1 x 2.5 |

| GROUNDCOVERS | Common Name | Mature Size |
|--|------------------------------|-------------|
| <i>Acacia baileyana 'Winter Gold'</i> | Prostrate Cootamundra Wattle | 0.3 x 2 |
| <i>Dichondra repens</i> | Kidney Weed | 0.2 x 1.5 |
| <i>Grevillea 'Pooninda Royal Mantle'</i> | Grevillea | 0.2 x 4 |
| <i>Myoporum parvifolium</i> | Creeping Boobialla | 0.2 x 2 |

Landscape Tree Plan
 1:2000



Landscape Tree Plan
 1:750

NOT FOR CONSTRUCTION

© 2016 Site Image (NSW) Pty Ltd. ABN 44 801 262 380 as agent for Site Image NSW Partnership. All rights reserved. This drawing is copyright and shall not be reproduced or copied in any form or by any means (graphic, electronic or mechanical including photology) without the written permission of Site Image (NSW) Pty Ltd. Any license, expressed or implied, to use this document for any purpose what so ever is restricted to the terms of the written agreement between Site Image (NSW) Pty Ltd and the instructing party.

The contractor shall check and verify all work on site (including work by others) before commencing the landscape installation. Any discrepancies are to be reported to the Project Manager or Landscape Architect prior to commencing work. Do not scale this drawing. Any required dimensions not shown shall be referred to the Landscape Architect for confirmation.

| Issue | Revision Description | Drawn | Check | Date |
|-------|----------------------|-------|-------|------------|
| C | For Comment | LM | NM | 20.08.2019 |
| B | For Comment | SM | NM | 19.12.2018 |
| A | For Comment | JW | NM | 02.10.2018 |

| LEGEND | |
|--------|--|
| | <i>Pyrus 'Aristocrat'</i> (Type 1) |
| | <i>Ginkgo biloba</i> (Type 2) |
| | <i>Lagerstromia indica 'Natchez'</i> (Type 3) |
| | <i>Pyrus 'Capital'</i> (Type 4) |
| | <i>Nyssa sylvatica</i> (Type 5) |
| | <i>Gleditsia tricanthos 'Shademaster'</i> (Type 6) |
| | <i>Pistacia chinensis</i> (Type 7) |
| | <i>Fraxinus excelsior 'Aurea'</i> (Type 8) |
| | <i>Quercus palustris</i> (Type 9) |
| | <i>Populus nigra 'Italica'</i> (Type 10) |
| | Earth Mound Trees |

SITE IMAGE
 Landscape Architects
 Level 1, 3-5 Baptist Street
 Redfern NSW 2016
 Australia
 Tel: (61 2) 8332 5600
 Fax: (61 2) 9698 2877
 www.siteimage.com.au

Client:
Baiada

Project:
**Oakburn Processing Plant
 Oxley Highway**

Drawing Name:
**Landscape
 Tree Masterplan**

PRELIMINARY

Scale:
 Job Number: **SS18-3745**
 Drawing Number: