


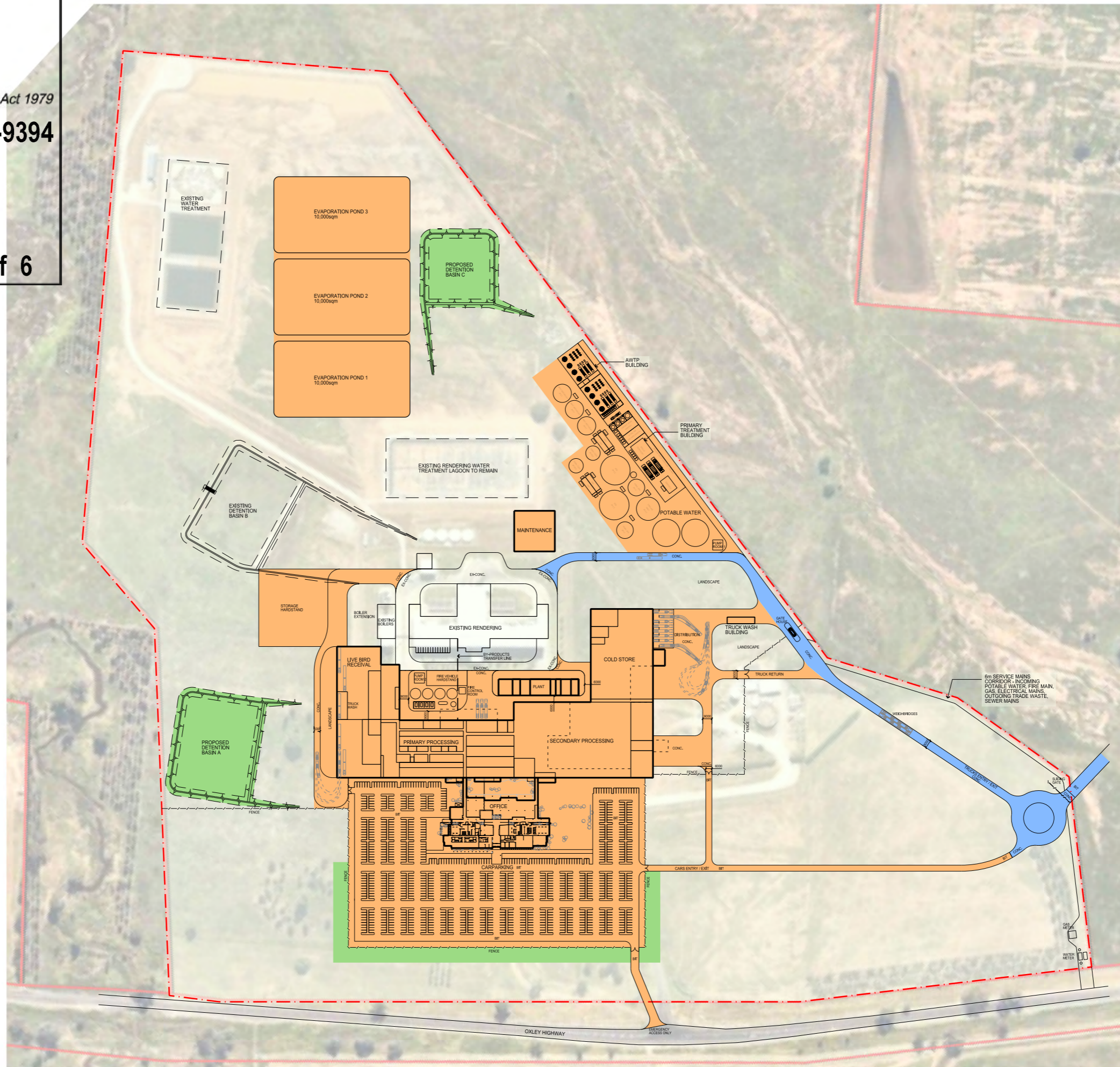




PAVEMENT LEGEND

BIT.	HOT MIX BITUMEN
CONC.	CONCRETE FOR HEAVY VEHICLES
EX-CONC.	EXISTING CONCRETE

	HEAVY DUTY CONCRETE (25.515sqm)
	EXISTING CONCRETE (6.525sqm)
	LIGHT DUTY PAVEMENT (36,000sqm)



PAVEMENT LEGEND

- BIT. HOT MIX BITUMEN
- CONC. CONCRETE FOR HEAVY VEHICLES
- EX-CONC. EXISTING CONCRETE

STAGE 1 -
SITE COMPOUND, WORKSHOP, LANE
EXTENSION, INTERNAL ACCESS ROADS
TO EXISTING RENDERING BUILDING

STAGE 2 -
BULK EARTHWORKS, SITE
PREPARATION, DETENTION BASINS,
PERIMETER LANDSCAPE, SCREENING
MOUNDS AND PLANTING

STAGE 3 -
PROCESSING BUILDING, CARPARK &
ROADS, OFFICE BUILDING,
MAINTENANCE, WASTE WATER
TREATMENT, PLANT BUILDINGS, PONDS





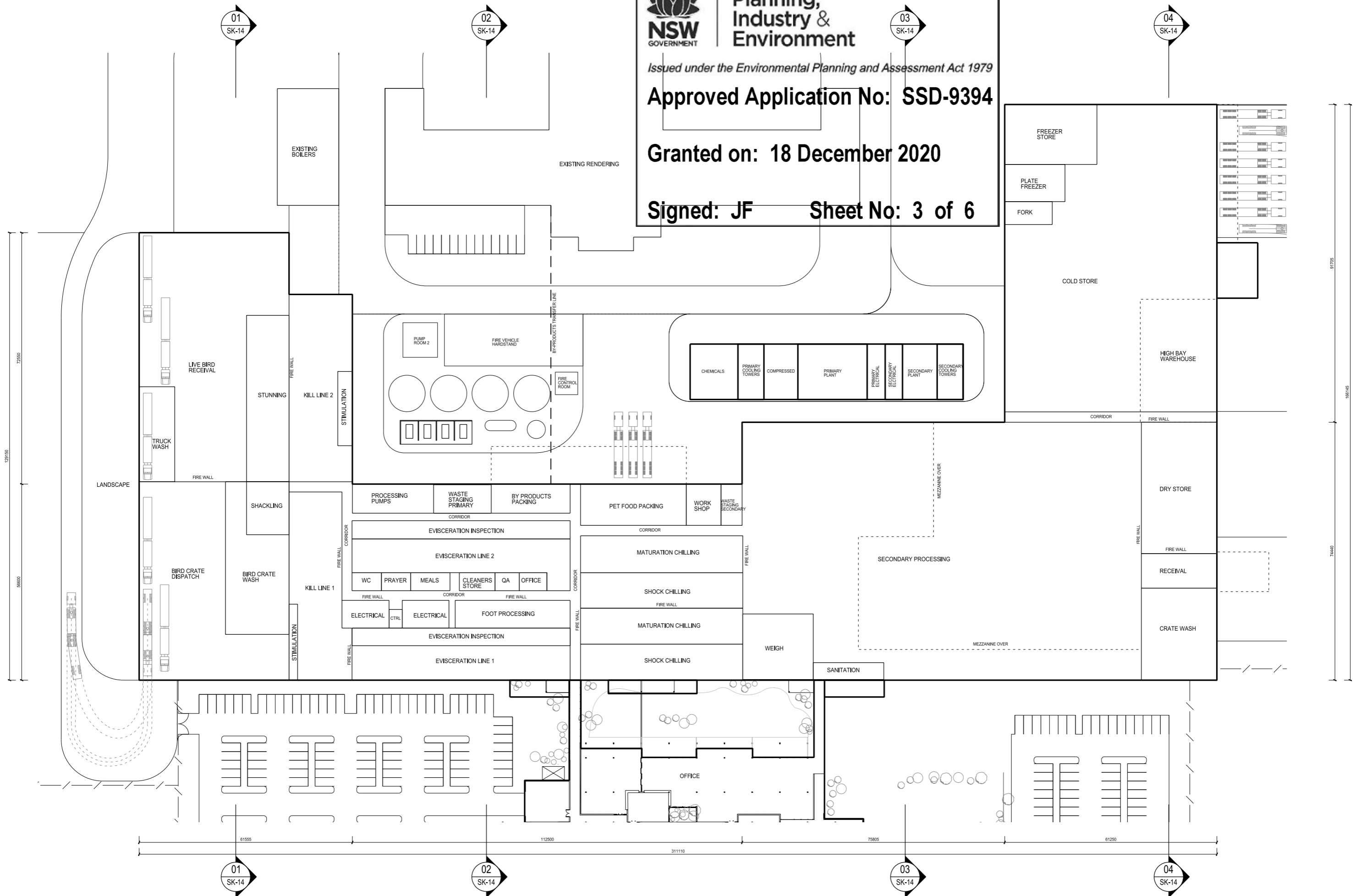
Planning, Industry & Environment

Issued under the Environmental Planning and Assessment Act 1979

Approved Application No: SSD-9394

Granted on: 18 December 2020

Signed: JF Sheet No: 3 of 6



Commercial Industrial Residential Precinct Specialist Design
Suite 702, 83 Mount Street, North Sydney NSW 2060
T 02 9529 9585 F 02 9529 8899
E info@sbaarch.com.au W www.sbaarch.com.au

CLIENT

OAKBURN PROCESSING PLANT

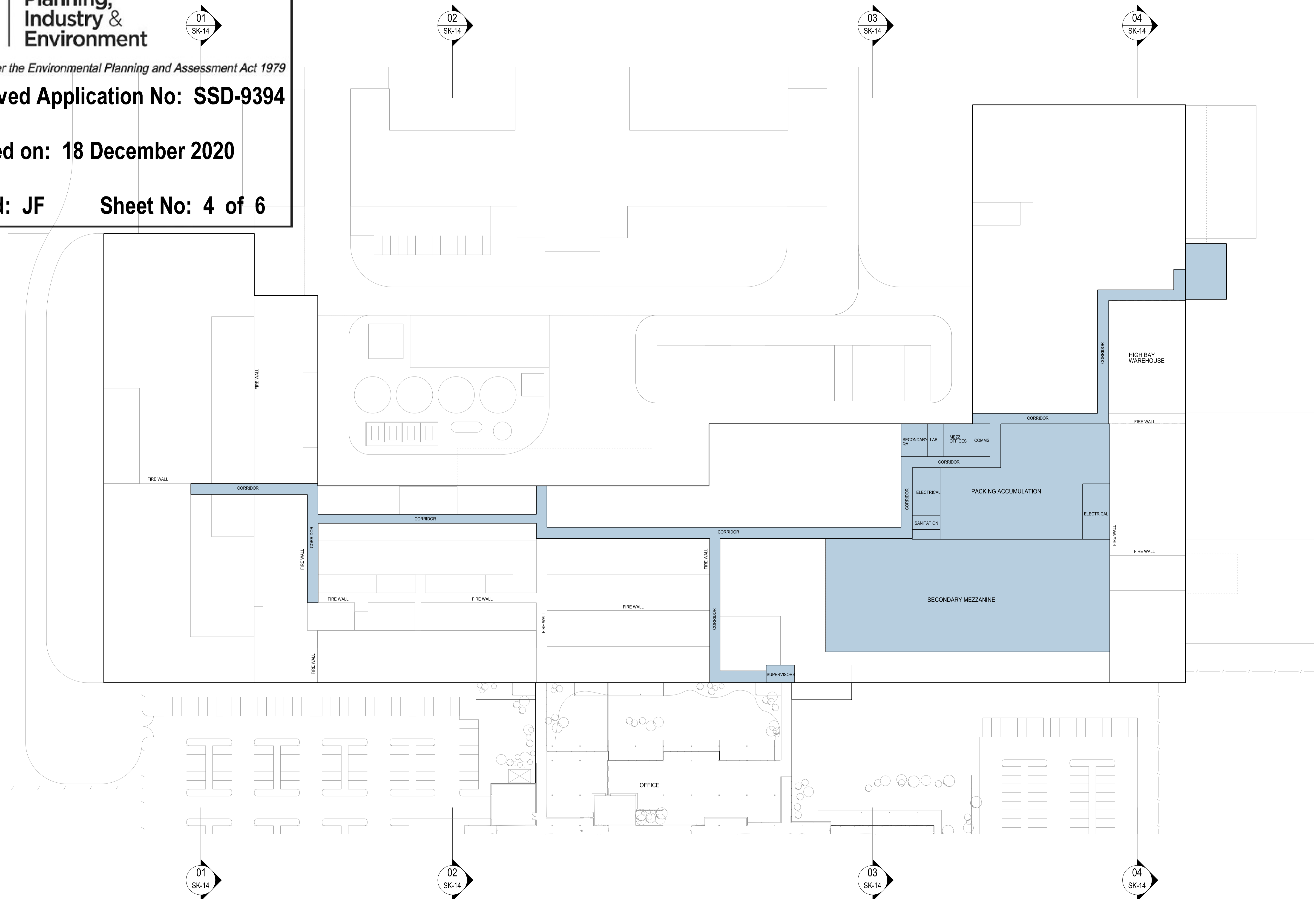
OXLEY HIGHWAY, TAMWORTH

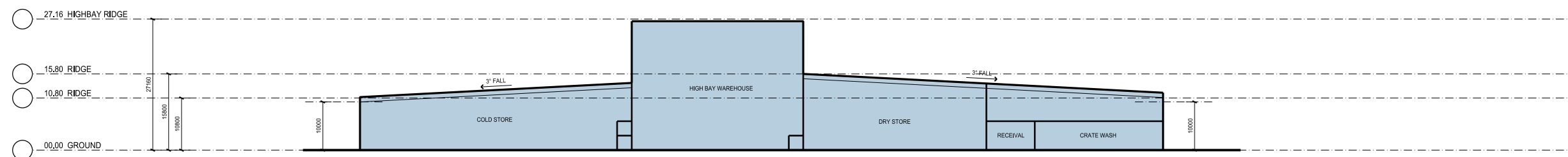
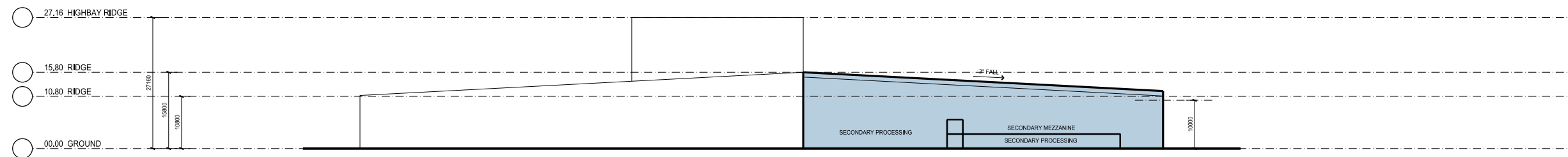
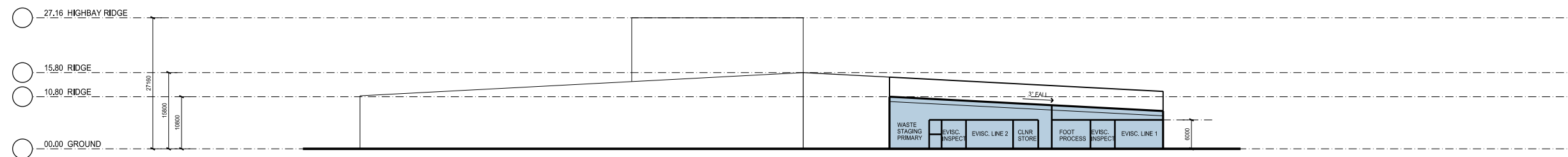
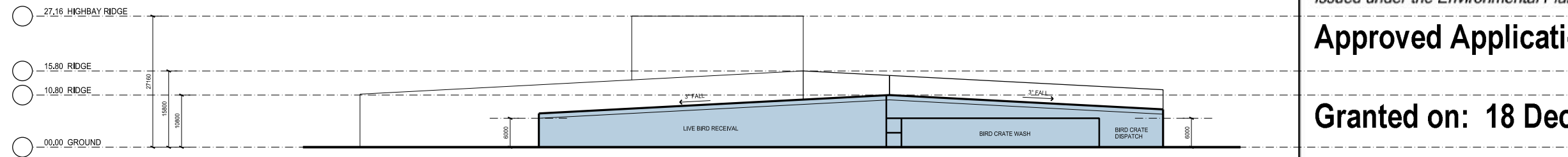


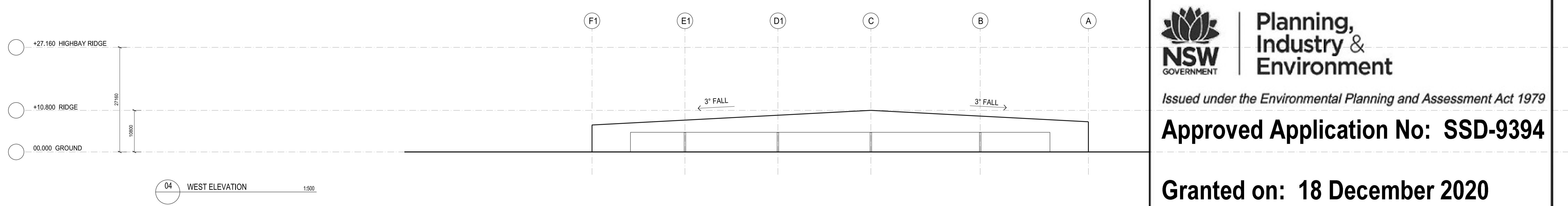
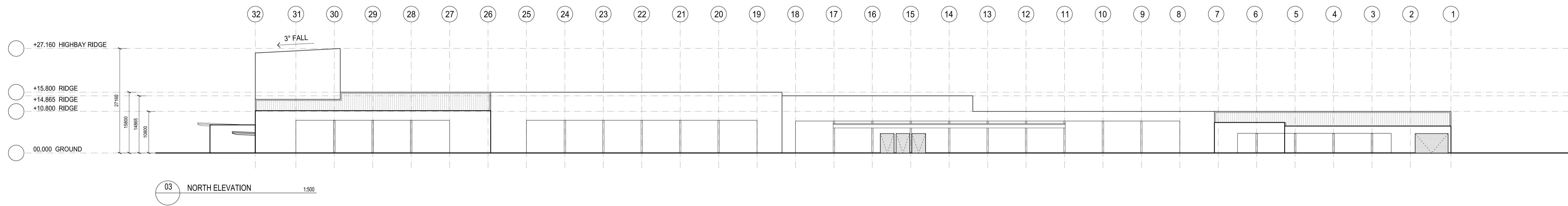
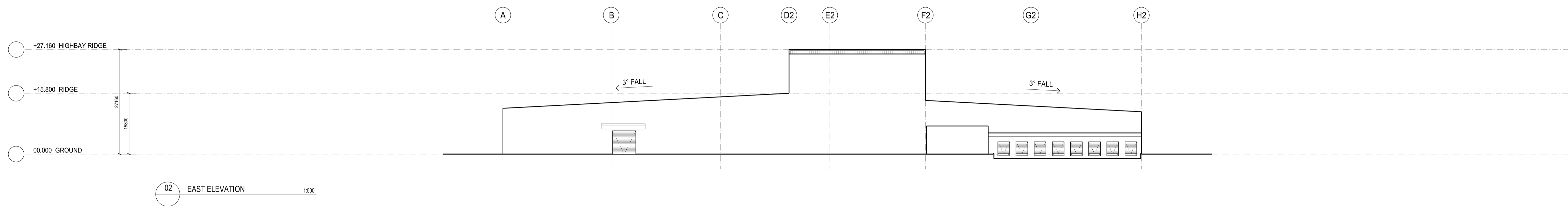
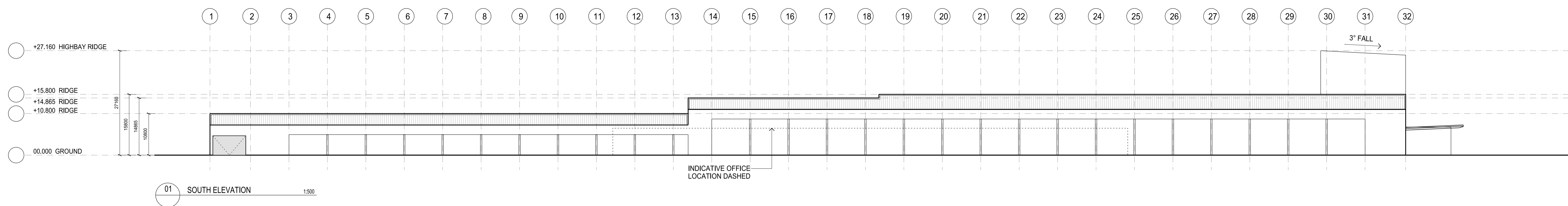
DRAWING TITLE
GROUND FLOOR PLAN
PROCESSING FACILITY

DATE 16.10.20 SCALE 1:500@A1 JOB NO. 19106 DRAWING NO. SK 11 D


Planning, Industry & Environment
 Issued under the Environmental Planning and Assessment Act 1979
Approved Application No: SSD-9394
Granted on: 18 December 2020
Signed: JF **Sheet No: 4 of 6**








Planning, Industry & Environment
 Issued under the Environmental Planning and Assessment Act 1979
Approved Application No: SSD-9394
Granted on: 18 December 2020
Signed: JF **Sheet No: 6 of 6**